

VINCENT PAPAIX



contact@vincentpapaix.com
25 years old
French

Digital compositor



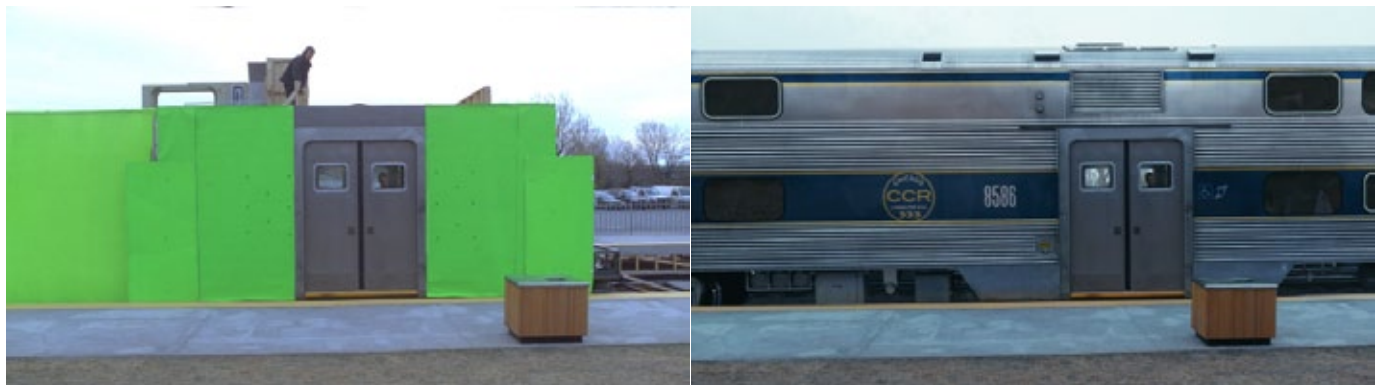
References available upon request.



Thor

www.imdb.com/title/tt0800369

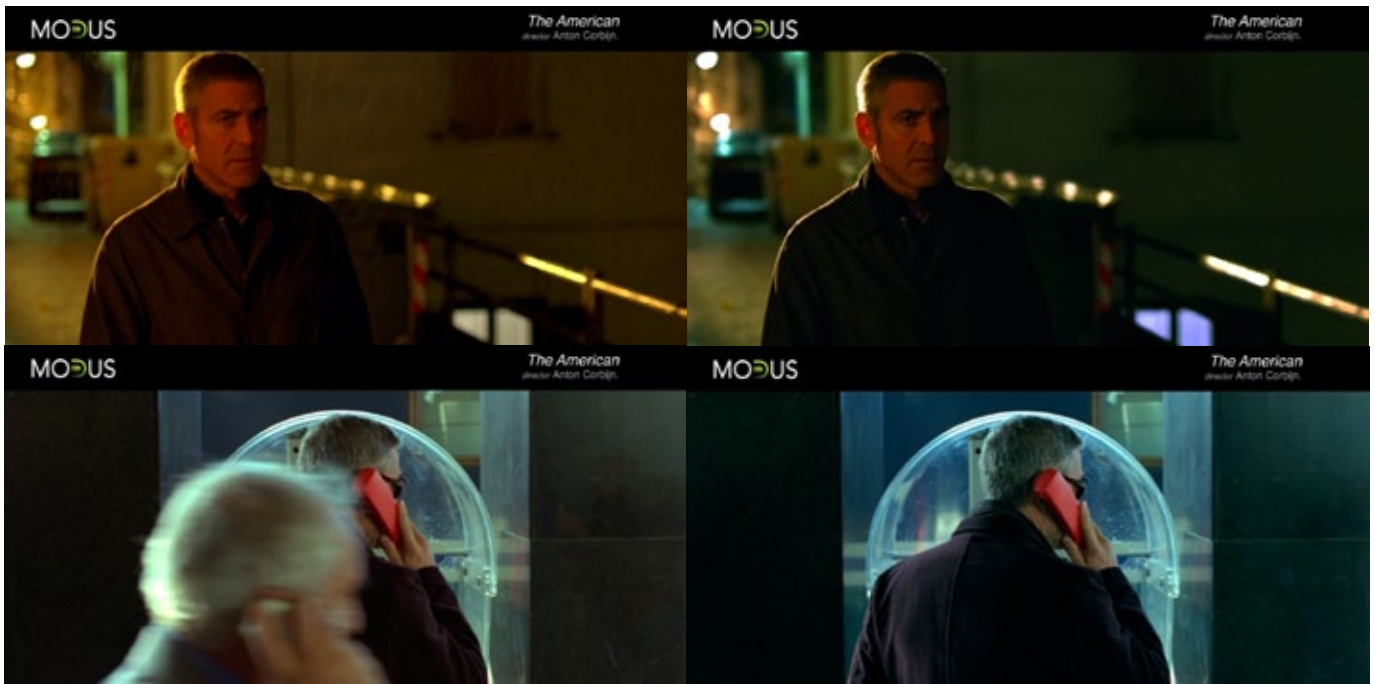
I worked at Digital Domain Vancouver on Thor. I comped CG creatures on live action plate and some full cg stereo shots. The first and second images are environment shots. The third image is the giant frost beast, he comes out of his cage, breaks the ice and roar before running, I have had a lot of destruction fx to comp on this shot, and a mix of matte painting and cg as BG. The fourth image is the ice weapon close up, I was responsible of the look of this from the very beginning.



Source Code

www.imdb.com/title/tt0945513

I was Lead Compositor on 'Source Code. I worked closely with the look dev artist to do the first key compositing of the cg train. I also made a nuke template of the train for the others compositors.

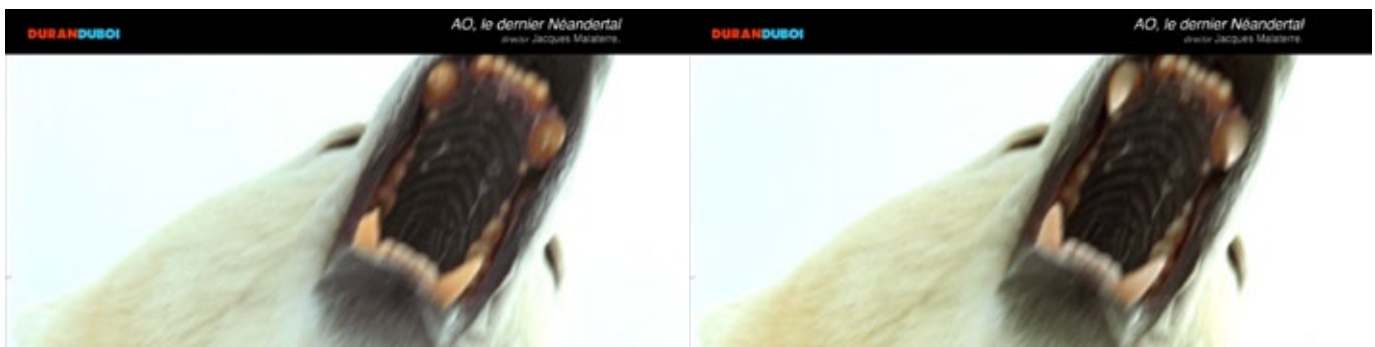


The American
Supervisor Luc Julien

www.imdb.com/name/nm3448456

I was Lead Sequence compositor working with Nuke on this project. I removed the rain by using camera mapping. I had the camera3d, clean plate (done by a matte painter) and a layout 3d. Then, two compositors helped me by doing the roto and by painting to erase rain drops on George. I took all the elements together and did the final composite.

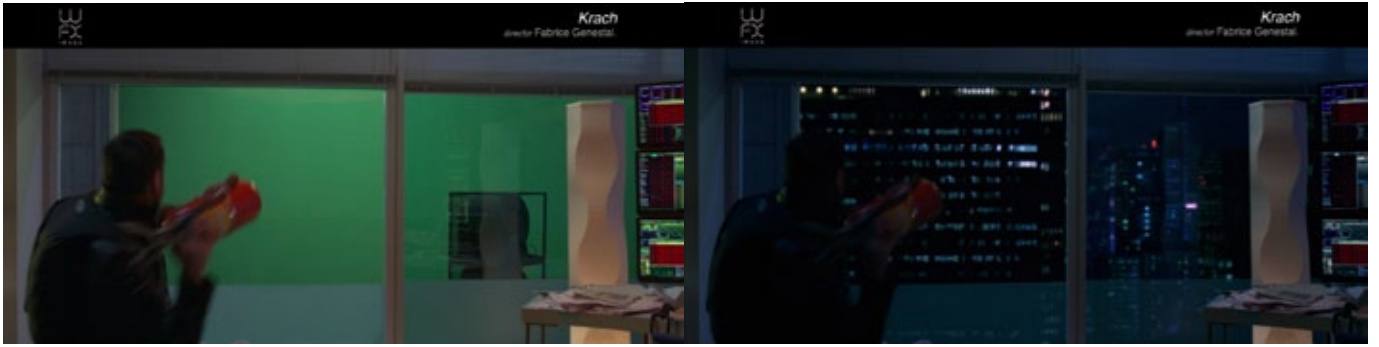
In the second image, I needed to remove a character and the reflection of a man on the right. I did different morphings of George and I cleaned all reflections in the glass.



AO, le dernier Néandertal
Supervisor Thierry Delobel

www.imdb.com/name/nm3448456

I did a 2d track of the teeth, and I changed the colour so that they appeared to be whiter.



Krach
Supervisor Roxane Fechner

www.imdb.com/title/tt1135083

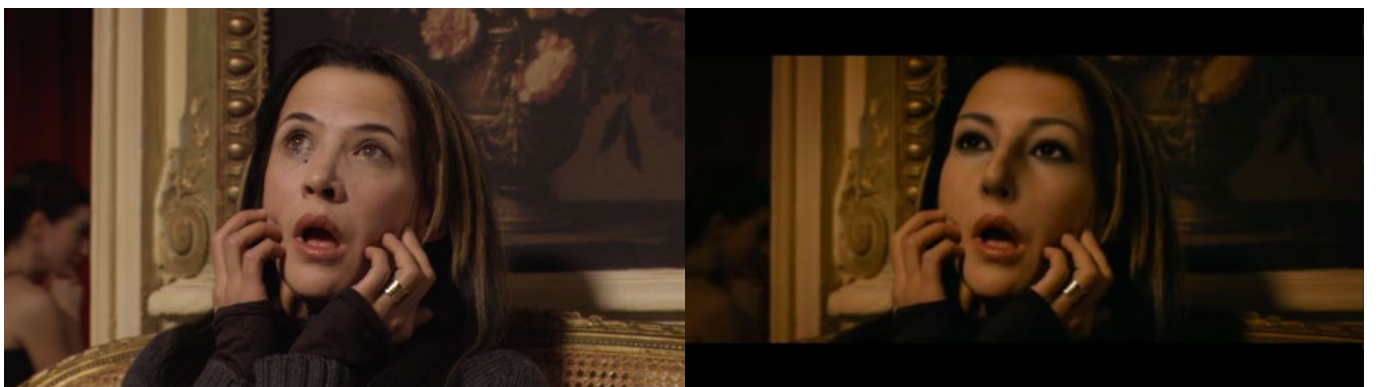
I did all the keying on the final sequence in Nuke.



L'Autre Monde
Supervisor Nicolas Rey

www.imdb.com/title/tt1479269

I was Lead Compositor on 'L'autre Monde'. I did the 2d pipeline and the workflow setup in Nuke, which enabled the team to do all types of shots for this show. Then, I trained 5 lighters on Nuke in order for them to do precomp/comp. I was responsible for the final composite.





Ne Te Retourne Pas
Supervisor Guillaume Terrien

www.imdb.com/title/tt1075113

I was a Senior compositor on 'Ne Te Retourne Pas'. I had the clean plate and the roto. I was responsible for the final composite. The work was done on Nuke.



Barney's version
Supervisor Luc Julien

www.imdb.com/title/tt142389

I did all the keying for this sequence. There was all type of framing. I created my own defocus node based on the convolve node. I also did the grading of this sequence.